

**GREMOTOOL**   
PRÄZISIONSSPANNSYSTEME

Gremotool GmbH



GREMOTOOL  
Präzisionssysteme

Wilerstrasse 3  
CH-9200 Gossau

info@gremotool.ch  
www.gremotool.ch

Telefon +41 (0)71 930 03 90

# GREMOTOOL – Swiss Precision

Our clamping devices stand for maximum precision, process reliability, and stability.

## Gremotool

– Clamping devices have been in use for many years and are used throughout Europe. Developed entirely in Switzerland, our clamping devices are assembled and tested in our own factory. Building on this, we supplement our products with innovative developments, focusing on future requirements.

With our centre clamps, we offer flexible and precise clamping devices for both individual parts and automated large-scale production. The clamping devices cover most applications, from simple workpiece handling to robot-changed workpieces. The control of the clamping devices can be individually adapted.



# Exciting solutions from Gremotool

Innovation for a process-reliable future

**The rapid pace of development in tool and machine construction, particularly in automation, makes it necessary to examine and network all related processes.**

The availability of modern machine tools and correspondingly powerful machining strategies should be continuously increased. Process reliability is becoming increasingly important, and clamping devices play a central role in this. Another key component for success is skilled personnel who select and use the clamping equipment correctly. Gremotool – the latest generation of clamping equipment – offers reliable and stable workpiece clamping that can withstand the performance demands of today's manufacturing processes.



**Vehicle  
construction**



**Aerotech**



**Aerospace**



**Railway industry**



**Toolmaking**



**Mechanical  
engineering**



**Medical technology**

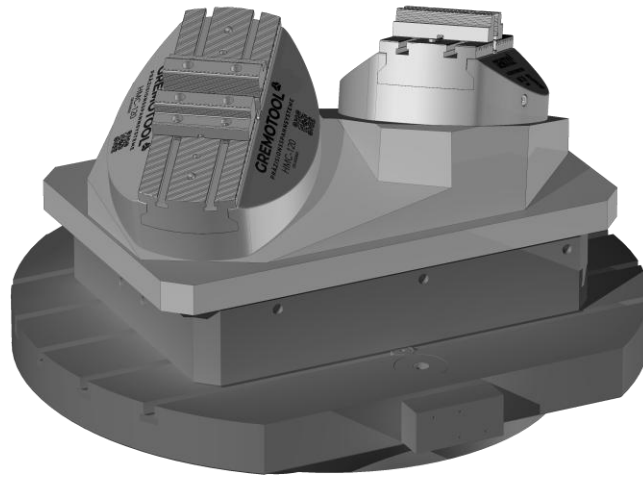


**Research**

# Clamping into the next dimension

Gain process reliability with Gremotool clamping devices

Modern automated production facilities demand stability, reliability and networking. Regardless of whether machining is carried out in 3-, 4- or 5-axis production, Gremotool clamping devices optimised for automation are available. If required, the clamping device communicates directly with the production facility and provides reliable information on clamping force, jaw position and the accelerations that occur. Thanks to integrated sensor technology, measured in the form of a force-fit connection to the workpiece, conclusions can be drawn about tolerance and surface quality.



# High-precision workpiece clamping system

Made in Switzerland



## Consulting & Engineering

Support with challenges in workpiece clamping technology for conventional and highly automated production by Gremotool specialists.



## Logistics

Transport partners deliver the quality products undamaged to the desired location.



## Manufacturing & Sales

Manufactured by strategic partners in Switzerland, Germany and Austria, our products are delivered to your premises via regional distribution partners.



## Services & Support

Maintenance and servicing of Gremotool workpiece clamping technology, including modifications and/or adjustments to our own and third-party products.



## Assembly & Quality Assurance

Internal assembly of components, including functional testing and acceptance by Gremotool, guarantees reliable clamping devices.



## Our strengths

Customer-oriented, flexible, creative, quality-conscious and punctual.

# 4 pillars of successful manufacturing



## **machining tools**

Each workpiece requires a different machining process and therefore different tools. If the tools assigned to the machining process are not available in sufficient quantity and quality, production cannot begin.



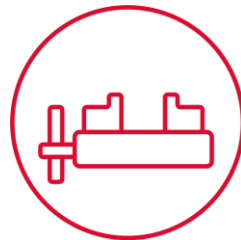
## **raw material**

Without the raw material, no workpieces can be produced. If this does not meet the specifications and there is insufficient stock, processing cannot be successful. The higher the degree of automation, the more precisely the raw material geometry must be determined in order to minimise potential sources of error.



## **CNC programmes**

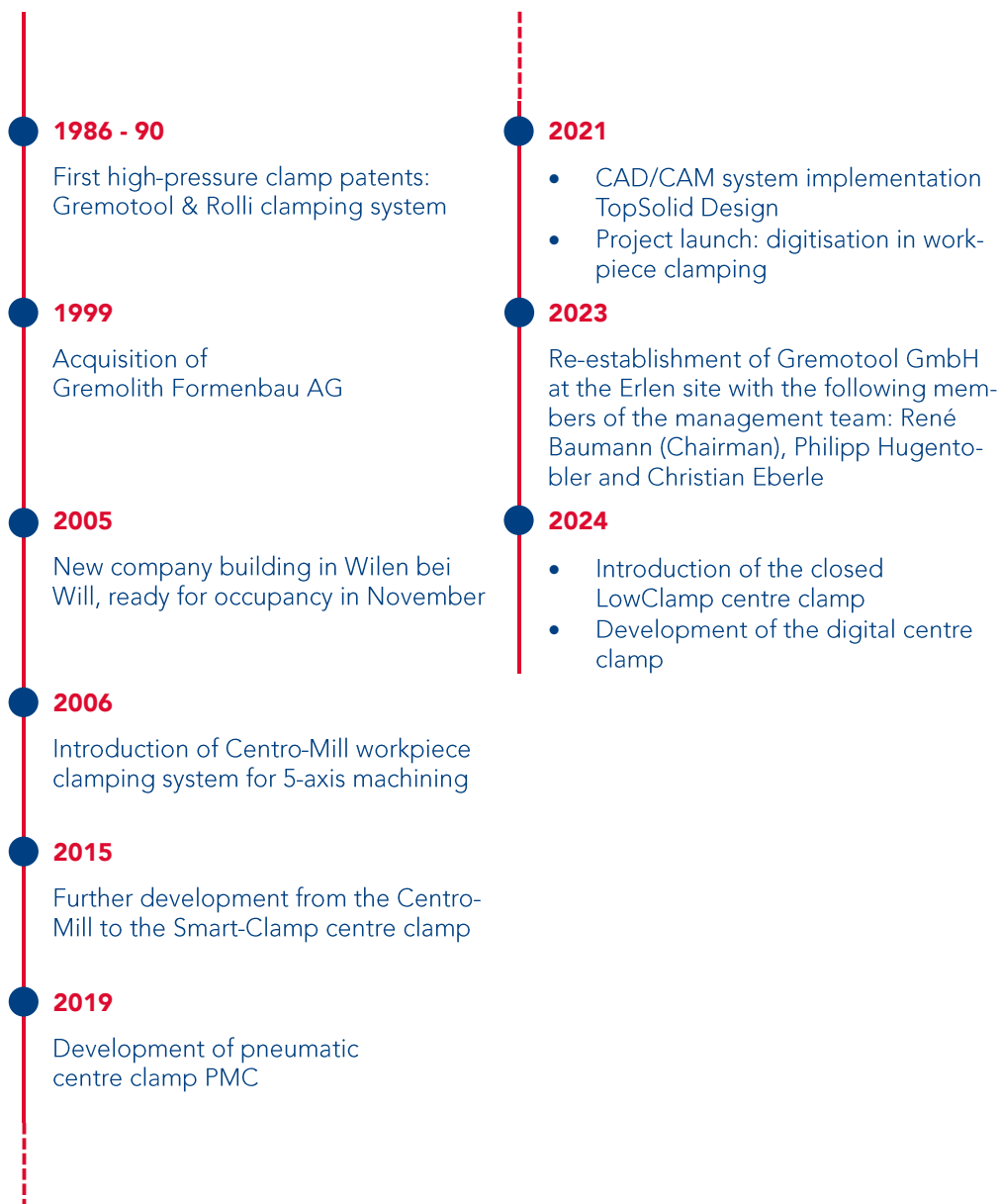
Today, CAD/CAM systems support the creation of CNC programmes for the machines. Nevertheless, preliminary work by employees is still necessary in order to create the required procedures and definitions for production. Without CNC programmes, automated production cannot be started.



## **workpiece clamping**

The optimal solution for every machining application. Gremotool Gripp jaws ensure that the raw material remains clamped on the clamping device even without pre-forming. Torque or air or oil pressure can be used to apply a clamping force suitable for the raw material to ensure a secure hold.

# company history



## Your contact persons

---



**René Baumann**

Management and sales

«**Industrie 4.0 – a (r)evolution? »**



**Philipp Hugentobler**

Technology & Development

«**Taking into account the entire process from manufacturing to application during development and constantly learning new things is a motivating challenge. »**



**Christian Eberle**

Technology & Development

«**Captured data influences the long-term success of today's manufacturing.»**



**Gerda Weissteiner**

Administration and customer service

«**Joy, heart and commitment.»**

# Engineering

Tailored to your requirements

## Combined CAD/CAM

The digital twin is already present in the name. Gremotool clamping devices are designed in the same programme used to create the manufacturing programme. This makes it possible to update changes to the geometry of the finished workpiece with minimal programming effort for manufacturing. In combination, product development becomes scalable across multiple levels of manufacturing.

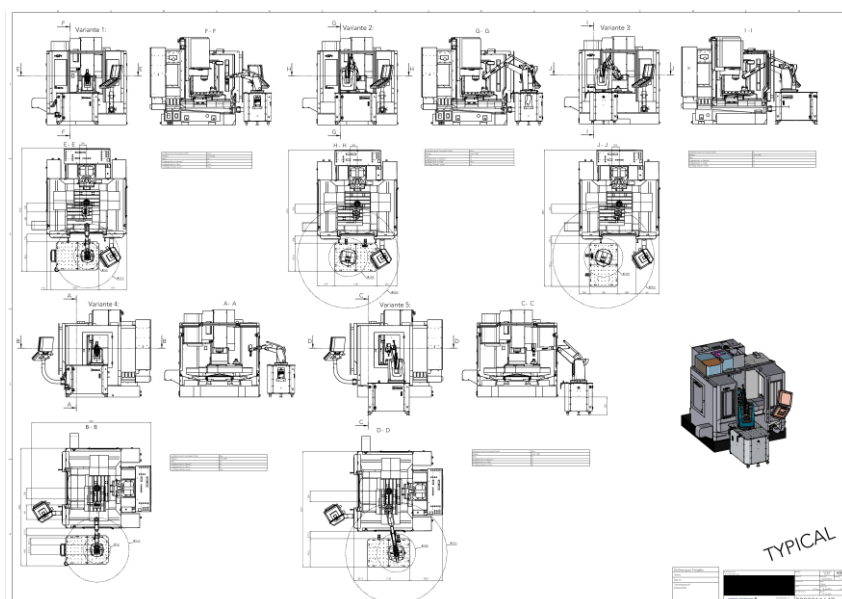
## Special solutions according to customer requirements

Whether you need a special jaw or to equip a machine with a hole pattern tower, Gremotool offers customised clamping solutions. Together, we offer over 60 years of expertise in various areas of manufacturing, systems engineering and mechanical engineering to guarantee you the best possible clamping solution for reliable production.

## Series parameterised

The consistent parameterisation of the design data for all clamping devices enables Gremotool products to be manufactured cost-effectively, flexibly and according to customer requirements. Even special jaws for specific applications can be provided quickly and easily using this approach.

**Are you looking for a new approach to clamping? Contact us, we will resolve your clamping issues and ensure a secure hold.**



# Digitised – Process reliability

---

## **sensors**

For the age of Industry 4.0, Gremotool installs various types of sensors in selected products. These include acceleration, pressure and force measurement sensors. These are read out and temporarily stored by a microcontroller. The power supply for these components is provided by a rechargeable battery.

## **monitoring**

Once the data has been collected, it is sent by the microcontroller via a wireless connection to a base station next to the machining centre. There it is stored and evaluated. This allows the user to access additional machine-independent values directly during the manufacturing process. This gives them deeper insight into the machining process and allows them to optimise it in a targeted manner.

## **process stability**

Clamping devices enhanced with these functions enable process stability to be ensured in automated production. Key factors in workpiece clamping are monitored and evaluated:

**Is the workpiece still sufficiently clamped?**

**What forces are acting on the workpiece?**

**Is there still enough energy available for secure clamping?**

**Do vibrations occur during the manufacturing process?**

This allows conclusions to be drawn about tolerances and surface quality on the component while it is still being machined.



### Imprint

Gremotool GmbH  
Wilerstrasse 3  
CH-9200 Gossau  
Schweiz

[www.gremotool.ch](http://www.gremotool.ch)  
[info@gremotool.ch](mailto:info@gremotool.ch)  
+41 (0)71 930 03 90

Our general terms and conditions apply, which can be accessed at [www.gremotool.ch](http://www.gremotool.ch).

Further catalogues can be downloaded from the website [www.gremotool.ch](http://www.gremotool.ch)

Commercial Register:  
UID-Nr. CHE-498.310.590

This document is protected by copyright. All rights reserved. Any use, even partial use, in particular publication, duplication, distribution, reproduction, processing and/or modification, requires the prior written authorisation of Gremotool GmbH. Misprints, errors and technical changes reserved.

Publication Dec. 2025, 2<sup>nd</sup> Edition

